



FIRST FLOOR

INT. FIRST FLOOR: 4,640 ft²
 EXT. AREA FIRST FLOOR: 5,610 ft²
 INT. POOL HOUSE: 286 ft²
 INT. DETACHED GARAGE: 720 ft²

TOTAL INTERIOR: 13,728 ft²
TOTAL EXTERIOR: 5,757 ft²

Scale in feet. Indicative only. Dimensions are approximate. All information contained herein is gathered from sources we believe to be reliable. However, we cannot guarantee its accuracy and interested persons should rely on their own inquiries.

6 Dannielles Way, Bridgehampton

SAUNDERS
 A HIGHER FORM OF REALTY



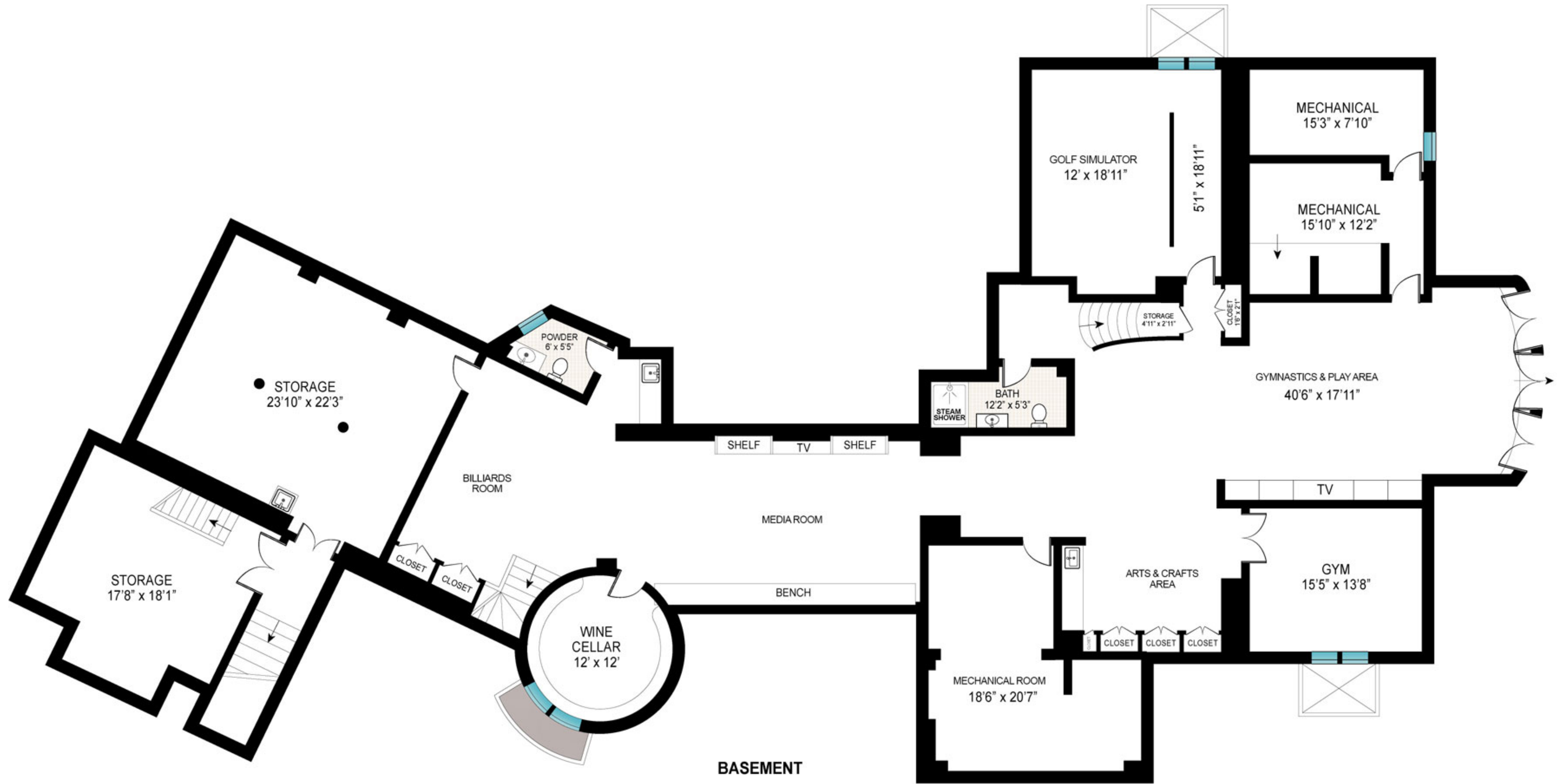
SECOND FLOOR

INT. SECOND FLOOR: 3,660 ft²
 EXT. SECOND FLOOR: 147 ft²

Scale in feet. Indicative only. Dimensions are approximate. All information contained herein is gathered from sources we believe to be reliable. However, we cannot guarantee its accuracy and interested persons should rely on their own inquiries.

6 Dannielles Way, Bridgehampton

SAUNDERS
 A HIGHER FORM OF REALTY



BASEMENT INT: 4,422 ft²

Scale in feet. Indicative only. Dimensions are approximate. All information contained herein is gathered from sources we believe to be reliable. However, we cannot guarantee its accuracy and interested persons should rely on their own inquiries.

6 Dannielles Way, Bridgehampton

SAUNDERS
A HIGHER FORM OF REALTY